



## Unlimited Weld Freedom with touch screen, recipe based, 4-axis motion controlled LW200 ND-Yag laser welder



The ND-Yag laser is widely accepted as the laser of choice when welding or cutting stainless steel. The optical train has been developed specifically for welding of small stainless steel components. It includes a beam steering mechanism and coupling of the beam and image to a computer monitor.

The motion control system includes precision ball screw slides with square rail bearings and optical limit sensors. A four axis motor controller ensures all positioning is accurate and sequenced correctly. A touch panel computer monitor allows easy interface for recipe creation or selection.

The electrical control panel is assembled to ensure easy maintenance and replacement of components. It has been designed for inherently safe operation with mains contactors and fusing.

Custom tooling can be provided to fixture specific welds for customer requirements. All tooling will be designed to be robust and easy to use.

- ND-Yag laser optimized for welding small stainless steel components
- 4-axis motion control system supports linear, rotational and helical weld profiles
- Machine interface includes touch screen, joystick and pilot operators
- Easy to use recipe management system
- Heavy machine chassis with ground steel top minimizes vibration
- Custom Tooling available to fit your specific application

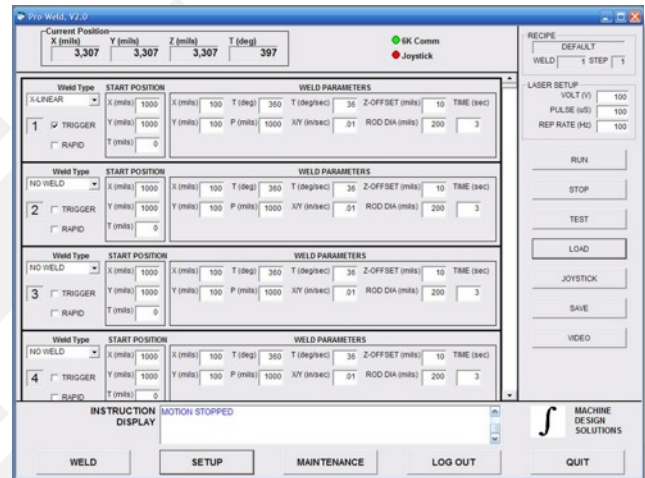
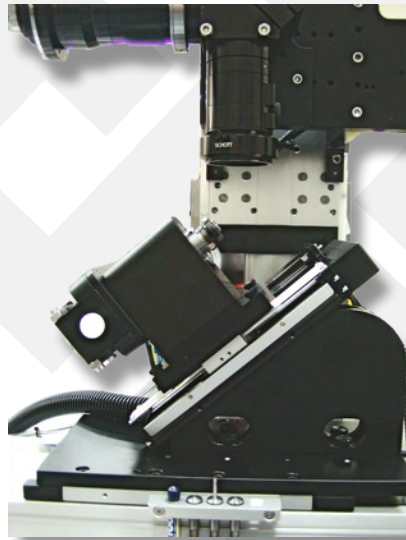
**AVID Innovation is a leading supplier of high quality, reliable and cost-effective equipment and machine solutions to the medical devices industry.**

**Visit our website to learn more about both our standard and customized automation solutions.**

**AVID Innovation**

## Additional Product Images:

Custom workpiece tooling can be supplied, supported on heavy-duty precision mechanics to ensure high welding accuracies and repeatabilities.



The touch-screen Graphical User Interface supports recipe based parts management. Customizable levels of password protection ensure only qualified personnel can access operation, setup and maintenance functions.

## Specifications:

Laser Specs	ND-Yag; max 480V; rep rate 20 Hz; energy output > 60 Joules at 850ms pulse width; max pulse width 850ms
Travel	Customizable
Positional Accuracy	+/- 5 um
Positional Repeatability	+/- 5 um
Utilities	110/220 VAC, single-phase, 50/60 Hz, Argon gas, CDA 85 PSI
Dimensions	30" H x 36" W x 30" D
Weight	500 lb